

JOURNAL OF SOIL AND WATER Conservation

SEPTEMBER-OCTOBER 1995

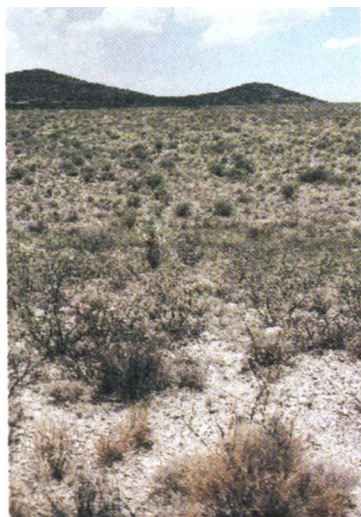
VOLUME 50, NUMBER 5

FEATURES

- 416 Preface to special issue: Water research and management in semiarid environments**
D.C. Goodrich and J.R. Simanton
- 420 Water management in semiarid environments**
Jan van Schilfgaarde
- 422 Management of droughts and floods in the semiarid Brazilian Northeast—The case for conservation**
Victor Miguel Ponce
- 432 Experimental watersheds: A historical perspective**
David A. Farrell

REPORTS

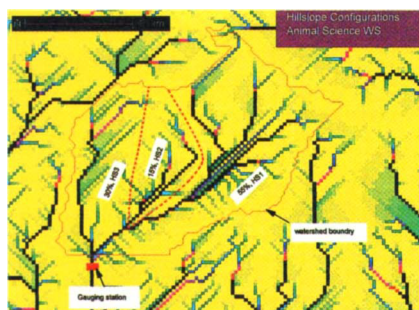
- 438 The use of remote sensing data in watershed research**
Edwin T. Engman
- 440 Laser altimeter measurements at Walnut Gulch Watershed, Arizona**
Jerry C. Ritchie, Karen S. Humes, and Mark A. Weltz
- 443 Spatial and temporal precipitation characteristics over a large gaged network**
Arlin D. Nicks
- 446 Assessing risk for water harvesting systems in arid environments**
I. Sanchez Cohen, Vicente L. Lopes, Donald C. Slack, and Carlos H. Yañez
- 450 Water infiltration control at the soil surface: Theory and practice**
Robert M. Dixon
- 454 An Australian water balance model for semiarid watersheds**
Walter C. Boughton
- 457 Controls and determination of resistance to overland flow on semiarid hillslopes, Walnut Gulch**
Athol D. Abrahams, Anthony J. Parsons, and John Wainwright
- 460 Rainfall simulation to evaluate infiltration/runoff characteristics of a shortgrass prairie**
Gary W. Frasier, Richard H. Hart, and Gerald E. Schuman
- 463 Utilizing fractal principles for predicting soil hydraulic properties**
W.J. Rawls and D.L. Brakensiek
- 466 Runoff index values for frozen soil areas**
D.K. McCool, M.T. Walter, and L.G. King
- 470 The surface infiltration model**
Joseph Morin and Adar Kosovsky
- 477 Application of WEPP and GIS-GRASS to a small watershed in Indiana**
M.R. Savabi, D.C. Flanagan, B. Hebel, and B.A. Engel
- 484 The future of RUSLE: Inside the new Revised Universal Soil Loss Equation**
Daniel Yoder and Joel Lown



416



420



477

- 490 RUSLE technology transfer and implementation**
T.J. Kautza, D.L. Schertz, and G.A. Weesies
- 493 The site and condition specific nature of sensitivity analysis**
V.A. Ferreira, G.A. Weesies, D.C. Yoder, G.R. Foster, and K.G. Renard
- 498 The applicability of RUSLE to geomorphic studies**
T.J. Toy and W.R. Osterkamp
- 504 Effects of aggregation on soil erodibility: Australian experience**
R.J. Loch and C. Pocknee
- 507 The I_xE_A erosivity index: An index with the capacity to give more direct consideration to hydrology in predicting short-term erosion in the USLE modeling environment**
P.I.A. Kinnell
- 512 Assessing uncertainties in WEPP's soil erosion predictions on rangelands**
M. Tiscareno-Lopez, M.A. Weltz, and V. L. Lopes
- 517 Dynamic, distributed simulation of watershed erosion: The KINEROS2 and EUROSEM models**
R.E. Smith, D.C. Goodrich, and J.N. Quinton
- 521 Estimating the depth and length of sediment deposition at slope transitions on alluvial fans during flood events**
Richard H. French
- 523 Water erosion evaluation of tepetates in relation to reclamation and productivity**
J.L. Oropeza Mota, J.D. Ríos Berber, and E. Huerta Martínez
- 527 A sediment transport capacity formulation for application to large channel networks**
Jürgen Garbrecht, Roger Kuhnle, and Carlos Alonso
- 530 New strategies for the water data center**
Jane L. Thurman and Ralph T. Roberts
- 532 Water research and management in semiarid environments: Closing symposium address**
Kenneth G. Renard

RESEARCH

- 563 Residue incorporation by tillage—interaction of mass and cover**
D.K. McCool, D.E. Stott, J.M. Laflen, and D.L. Schertz
- 567 Water quality status of a USDA water quality demonstration project in the Eastern Coastal Plain**
K. C. Stone, P. G. Hunt, S. W. Coffey, and T. A. Matheny
- 571 Tillage influences as measured by ponded and tension infiltration**
S. D. Logsdon and T. C. Kaspar

DEPARTMENTS

- 412 SWCS view**
414 Pen Points
535 SWCS Annual Report
549 Products
553 Books
558 Upcoming
561 Editorial Calendar

Cover

Large background photo is summer air-mass thunderstorm over Walnut Gulch Experimental watershed; top left is schematic map of the USDA-Agricultural Research Service Walnut Gulch Experimental Watershed and its 10 primary gaged subwatersheds. Center is Walnut Gulch Flume 121, and bottom shows Walnut Gulch Flume 1. Photos courtesy of Roger Simanton.