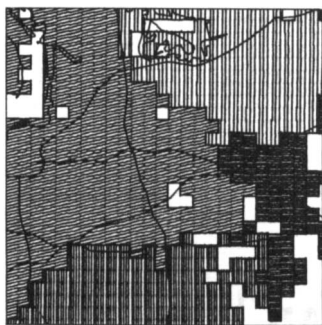
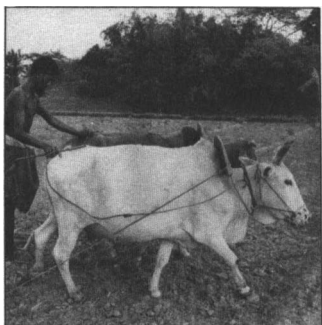


**CONTENTS****Features****444  
Viewpoint: Resource  
information for  
conservation decisions**

Chris J. Johannsen looks at some implications of the information revolution for conservationists

**446  
Soil conservation  
strategies in the Third  
World**

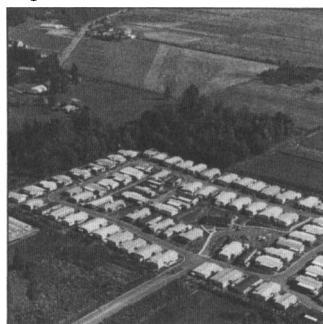
Norman W. Hudson outlines the conservation challenges in developing nations with an eye to the needs of those nations for outside support

**451  
Information  
management for  
conservation decisions**  
George E. Brown, Jr., lends a congressional perspective to one of the conservation community's new frontiers**455  
Conservation capital in  
the United States,  
1935-1980**

George A. Pavelis evaluates the nation's agricultural productivity from the standpoint of soil and water conservation improvements in place on the land

**459  
Resolving conflict: An  
expert panel in action**  
Tom D. Lustig describes the involvement of a blue ribbon panel of conservation specialists in helping to resolve a long-standing land management controversy**462  
Containerized pine  
seedlings for  
revegetating difficult  
sites**  
James P. Barnett explains a technique for establishing pine seedlings when conventional methods fail**465  
Right-to-farm laws: Do  
they resolve land use  
conflicts?**

Mark B. Lapping, George E. Penfold, and Susan Macpherson examine the effectiveness of laws protecting agricultural land in an era of return migration to rural areas

**468  
County approaches to  
farmland protection**  
Frederick Steiner, Richard Dunford, and Lori Koler look at the way four dissimilar counties in Washington have used zoning to stem farmland conversion**472  
Agricultural land  
retention: The  
Massachusetts  
experience**

Tim Storrow and Fredric Winthrop, Jr., describe a state program based on the purchase of development rights that emphasizes field analysis and extensive evaluation of farmland nominated for protection

**475  
Commentary: Soil  
conservation: PIK in a  
poke**  
Ken Cook analyzes the soil conservation aspects of the Payment-in-Kind program

## CONTENTS

### Departments

443

Pen points

477

In the news

483

Upcoming

484

Books, etc.

### Research reports

487

**Reasons why Ohio farmers decide for or against conservation tillage**

Howard Ladewig and Ray Garibay

489

**Alcohol production from corn: Compatible with soil conservation?**

Douglas A. Christensen and Earl O. Heady

494

**Runoff curve numbers for conservation tillage**

Walter J. Rawls and H. H. Richardson

496

**Field verification of runoff curve numbers for fallow rotations**

James M. Steichen

499

**Soil survey data for land use planning: A case study of raspberry cultivation in British Columbia**

H. Schreier

504

**Economic returns from alternative corn and soybean tillage systems in Indiana**

D. H. Doster, D. R. Griffith, J. V. Mannering, and S. D. Parsons

509

**Controlling agricultural soil loss in Arkansas' North Lake Chicot watershed: An analysis of benefits**

C. Tim Osborn and Robert N. Shulstad

512

**Tillage effects on corn and soybean production in farmer-managed, university-monitored field plots**

R. M. Cruse, G. A. Yakle, T. C. Colvin, D. R. Timmons, and A. L. Mussleman

### Cover

A sublime vista is used to symbolize efforts by conservationists to sustain the beauty and productivity of forest resources (see pages 459 and 462). Photograph courtesy of Boise Cascade Corporation.

The Soil Conservation Society of America is dedicated to promoting the science and art of good land use, with emphasis on conservation of soil, water, air, and related natural resources, including all forms of beneficial plant and animal life. To this end, SCSA seeks through the *Journal of Soil and Water Conservation* and other programs to educate people so that mankind can use and enjoy these natural resources forever.

### OFFICERS

#### President

Floyd E. Heft, Columbus, Ohio

#### President-elect

Roland R. Willis, Stillwater, Okla.

#### Vice-president

Joe D. Nichols, Ft. Worth, Tex.

#### Second Vice-president

Maurice G. Cook, Raleigh, N.C.

#### Past-president

Chris J. Johannsen, Columbia, Mo.

#### Treasurer

Dennis A. Nahnsen, Des Moines, Iowa

#### Executive Vice-president

Walt Peechatka

### COUNCIL

Elmer E. Offerman, Storrs, Conn.

Charles B. Place, Jr., Macon, Ga.

Michael O. Cornett, Cullman, Ala.

Paul B. Hoskins, Circleville, Ohio

Thomas J. Thiel, Peoria, Ill.

Norris P. Swanson, Lincoln, Nebr.

Charles M. Thompson, Temple, Tex.

Amos I. Garrison, Boise, Idaho

David R. Cressman, Kitchener, Ont.

John R. Henry, Locust Grove, Va.

Tracy E. Klingaman, Orlando, Okla.

### STAFF

#### Editor

Max Schnepf

#### Assistant Editors

James L. Sanders

John Walter

#### Production Assistant

Betty J. Taylor

### EDITORIAL BOARD

A. D. Latonell (chm), Richmond Hill, Ont.

Blair T. Bower, Arlington, Va.

James E. Box, Jr., Watkinsville, Ga.

Donn G. DeCoursey, Oxford, Miss.

B. L. Harris, College Station, Tex.

Robert W. Harris, Wilsonville, Oreg.

R. J. Hildreth, Oak Brook, Ill.

Edward A. Johnson, Washington, D.C.

Lawrence W. Libby, East Lansing, Mich.

Dick Kover, Portland, Oreg.

William R. Oschwald, Urbana, Ill.

Gerald E. Schuman, Cheyenne, Wyo.

J. Herbert Snyder, Davis, Calif.

Frederick Steiner, Pullman, Wash.

Warren Zitzmann, Washington, D.C.

The JSWC (ISSN 0022-4561) is published six times a year in January, March, May, July, September, and November.

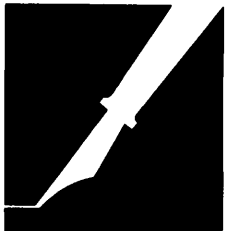
Copyright © 1983 by SCSA. SCSA

assumes no responsibility for statements and opinions expressed by contributors. Subscription is by membership in SCSA or by subscription. Membership dues: \$32.00 a year (\$37.00 outside the U.S. and Canada).

Institutional and individual subscriptions: \$22.00 a year (\$25.00 outside the U.S. and Canada). Address mail to SCSA, 7515 N.E. Ankeny Rd., Ankeny, IA 50021. Phone:

(515) 289-2331. Second class postage paid at Ankeny and Des Moines, Iowa. Postmaster, send form 3579 to JSWC, 7515 N.E. Ankeny Rd., Ankeny, IA 50021-9764.





## PEN POINTS

### Conservation a tillage by-product

A response is needed to the article by Korsching et al., "Adopter Characteristics and Adoption Patterns of Minimum Tillage: Implications for Soil Conservation Programs" [JSWC, September-October 1983, pp. 428-431]. The article contains a basic flaw in the analysis. While showing that adopters of minimum tillage follow the normal adoption curve and that adopters were "younger farmers with farm operations larger in size and scale," the authors' logic failed when they equated minimum tillage primarily with soil conservation. Soil conservation is a *by-product* of minimum tillage; the major advantage of minimum tillage is labor savings. Pierre Crosson [in "Conservation Tillage and Conventional Tillage," published in 1981 by SCSA] estimated the difference in labor requirements between conventional tillage and conservation tillage (which included minimum tillage) at roughly 100 percent, that is, minimum tillage requires only one-half as much labor as conventional tillage (preharvest activities only). The reason that younger farmers with larger farms adopt minimum tillage is the same reason they buy larger tractors; they are the specialized corn/soybean farmers, planting larger and larger acreages of cropland. The labor savings advantage of minimum tillage allows these adopters to plant more acres, farm more ground, and expand their operations. They consider minimum tillage to be an economically profitable, commercial innovation. While the authors earlier acknowledged a difference between other soil conservation technologies and minimum tillage, in the discussion section they revert to applying their results to *all* soil conservation technologies. The sentence "Knowing that soil conservation practices are adopted according to a pattern that is similar to other new practices provides conservationists a valuable tool in developing and implementing soil conservation programs" should read "Knowing that *minimum tillage* is adopted...."

A real problem in the literature concerning farmers' response to soil conservation technologies is lumping all of the technologies together or counting the number of practices adopted without

differentiating between the types of soil conservation technologies at all. In fact, there are very different types of soil conservation technologies, ranging from capital-intensive, land-based structures, such as terracing, to cropping patterns, such as sod-based rotations, and finally to mobile technologies, such as tillage choices. According to J. E. Carlson and associates [Idaho Agricultural Experiment Station Bulletin No. 601], in a study of farmers in the Palouse, a difference was noted in the *type* of soil conservation technology adopted by farmers, especially in the farmers' choices between land-based soil conservation technologies and mobile technologies, such as minimum tillage:

"The study showed that farmers did not adopt erosion control practices in a random or haphazard manner. Those control practices requiring minimal capital investment seemed to be used together, and those practices requiring large capital investment tended to be found together."

I conclude that not all soil conservation technologies are alike and that different technologies are adopted because of different types of farms and the structure of agriculture. For example, a dairy farmer can incorporate a sod-based rotation. A large landowner may adopt terraces or expensive land structures because of the tax write-off.

Therefore, while Korsching et al. show quite well that the adoption of minimum tillage fits the adoption-diffusion model, I would have to disagree with the authors and agree with F. Pampel, Jr., and J. C. Van Es [Rural Sociology 42(1): 57-71] that such a model only fits economically profitable or commercial innovations (which is the primary reason farmers adopt minimum tillage) and that the model still has little application to other soil conservation technologies having low immediate or short-term economic gains.

Sarah E. Fast  
Small Farm Resources Project  
Hartington, Nebraska

### EPIC: How valid?

The article "EPIC, A New Method for Assessing Erosion's Effect on Soil Productivity" by Williams, Renard, and Dyke [JSWC, September-October 1983,

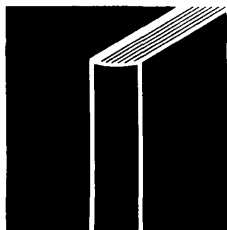
pp. 381-383] provides an insight into the implementation of the RCA [Resources Conservation Act] process. The effort by USDA [U.S. Department of Agriculture] to develop a method of quantifying the cost of soil erosion is commendable. The authors conclude that the EPIC model has produced reasonable results but still requires rigorous testing for validation.

Data presented in table 2 of the article do raise some questions concerning the validity of the model, at least for the Iowa yields reported. There are 10 yields reported for Iowa research plots. For nine of the plots, simulated yields are greater than measured yields. Of the eight corn yields compared, seven are higher for the simulated model. The eighth corn yield was roughly comparable for the simulated and measured methods. For the seven corn yields that were higher by the simulated method, yield differences ranged from 120 kilograms per hectare (2 bushels/acre) to 1,140 kilograms per hectare (19 bushels/acre), with an average of 714 kilograms per hectare (11.9 bushels/acre). From a statistical point of view, the standard deviations overlap. However, it does seem that some simulated yields should be lower than the measured yields if the EPIC model is providing an unbiased estimate of yields. Additional information about the location and kind of research plots and annual yields would be helpful in evaluating the data presented.

The potential uses listed for the EPIC model, in addition to the RCA analysis, indicate the impact this approach may have on soil conservation activities. Thus, it behooves all of us concerned with soil erosion, soil productivity, and conservation policies to encourage the testing needed for validation of this or other models that attempt to simulate field conditions.

T. E. Fenton  
Department of Agronomy  
Iowa State University  
Ames, Iowa

*"Pen Points" is a forum for comment on published material or land and water management issues in general. Readers are invited to express their views in a letter to the editor. Letters are judged on clarity of expression and pertinence. They should be as brief as possible. Long letters may be shortened. — Editor*



## BOOKS, ETC.

**Agricultural Management and Water Quality.** Edited by Frank W. Schaller and George W. Bailey. 400 pp., illus., 1983. Iowa State University Press, Ames, 50011. \$39.95.

Can conference proceedings be interesting? Schaller and Bailey make an excellent attempt in their recent book, *Agricultural Management and Water Quality*. Their editing of technical papers presented at the National Conference on Agricultural Management and Water Quality (May 27-29, 1981, Iowa State University) is to be commended. The proceedings cover major segments of agricultural nonpoint-source pollution, including current issues, pollutant sources/loads and impacts, best management practices, and policy implications.

Unlike other conference proceedings, photographs are placed at important section headings to heighten reader interest and entice the reader into the next section.

To mention a few highlights among the articles, Nelson and Logan's article on chemical processes and transport of phosphorus is an extremely comprehensive discussion of phosphorus forms. The authors survey in understandable language the various forms and lucidly discuss phosphorus transformations in the environment.

In a section on predicting loads and water quality impacts, Donigan, Imhoff, and Bicknell give a detailed description of the water quality model, HSPF (Hydrologic Simulation Program-Fortran). They examine the model's capability to analyze and to predict the quantity and quality of runoff from agricultural lands, including the development of best management practices (BMPs). In another article, Knisel, Foster, and Leonard discuss in straightforward terms the CREAMS mathematical model for assessing nonpoint-source pollution. The authors indicate the advantages of using the relatively simple CREAMS model to compare and choose between agricultural management practices.

Finally, in the part on agricultural best management practices, Baker and Johnson's "Evaluating the Effectiveness of BMPs from Field Studies" gives an excellent overview of the effectiveness of agricultural management practices in controlling water quality problems. They indicate the difficulty of showing statistically significant differences between practices because of uncontrolled variables in the farmer's fields or practices.

Two other authors, Nowak and Korsch-

ing, present particularly frank views on why farmers may reject best management practices. The authors found through surveys that farmers generally have a tendency to view BMPs as poor solutions to minor or nonexistent soil erosion and water pollution problems.

If there is a fault with the book, it is the lack of groundwater information among the articles. Overall, however, the editors did an extremely credible job of bringing order to the complex subject of agricultural nonpoint-source pollution. With the conference papers covering a broad spectrum—from economics to science to psychology—the editors worked effectively to present a coherent view of the current status of agricultural nonpoint-source pollution. If you are looking for a technical, informative publication on agricultural management and water quality, this book is a must.—CHARLES R. TERRELL, *Soil Conservation Service, U.S. Department of Agriculture, Washington, D.C. 20250*.

**Resource and Environmental Effects of U.S. Agriculture.** By Pierre R. Crosson and Sterling Brubaker. 275 pp., tbls., apps., index, 1982. Resources for the Future, Washington, D.C. 20036. \$15.00.

This research paper represents another significant contribution by RFF to the careful management of our natural resource base. Between now and the year 2010, the authors see additional demand being placed on farmland resulting in negative environmental consequences. In fact, the authors expect that production agriculture could change from "one of chronic surplus to one of recurring if not chronic scarcity."

This shift would be, in part, attributable to the continued growth of agricultural exports due to increasing world population and income. The authors' basic conclusion is that production costs and environmental damages will increase in real terms, resulting in at least a 25 percent rise in the cost of feed grains and soybeans. As a result of this additional pressure on land, the future impact on the environment from fertilizers, insecticides, herbicides, soil and water salinity, and sediment from soil erosion will require gradual changes in current policies to cope with the situation.

It is this latter problem, soil erosion, that most concerns the authors, in that they predict that sediment losses will double in

the next three decades.

The authors expect erosion to persist in two forms: the on-farm reduction in long-term productivity, and the off-farm impacts on ditches, streams, lakes, rivers, and water impoundment areas. They view the latter as being more severe because the on-farm impact can be overcome with additions of fertilizer, animal manures, and organic matter. Because they project that sediment loads will nearly double by the year 2010, public intervention is economically justified to remedy the off-farm impact.

Their suggested solution is the development of higher-yielding technologies with the potential to reduce soil erosion. An existing technology that can accomplish this is the expanded use of conservation tillage. They estimate that conservation tillage will be used on at least 50 percent of U.S. cropland by 2010.

The authors go on to review past policies in coping with point and nonpoint pollution, the use of pesticides, and soil conservation programs. Because the authors do settle in on soil erosion as the main environmental problem of agriculture, much space is devoted to the subject. The effectiveness of past SCS and ASCS programs is reviewed, including suggested policy changes such as targeting resources for farms with highly erosive soils, performance contracts, cross-compliance, taxing soil erosion, and increased government agency coordination.

Ultimately, greater social control will have to be exerted over the land to avoid these excessively high environmental costs, unless land-saving technologies are developed. As such, research should be an integral part of any future policy to reduce the stress on land, including baseline data on environmental changes.

In their analysis, the authors avoid the extensive use of quantitative modelling, opting rather for general descriptive changes. Although focusing primarily on national policy issues, they discuss some regional and state environmental concerns, such as soil and water salinity, a problem mainly in the western United States.

If one were to look for shortcomings of the book it would have to be the data one has to carefully struggle through to understand the authors' position on future trends and projections. At times, there is a tendency to belabor particular points, a distraction to the reader. On the other hand,

Crosson and Brubaker have provided us with a perspective on the future such that policy changes can be considered today to avoid crisis management tomorrow. Given its emphasis on soil erosion, the book reinforces the need for effective soil conservation programs. It therefore should be of particular interest to the soil conservation community.—DONN A. DERR, *Department of Agricultural Economics and Marketing, Rutgers University, New Brunswick, New Jersey 08903*.

**Land Drainage.** By L. K. Smedema and D. W. Rycroft. 1983. Cornell University Press, Ithaca, N. Y.

This textbook was prepared for land drainage courses in agricultural or civil engineering at the undergraduate and graduate levels. According to the authors, the book's subject areas relate to applied soil physics and applied hydrology. This approach apparently explains the limited emphasis on engineering design procedures and specifications. Water movement through soil, spacing of subsurface drains, and other hydrologic concepts are adequately covered.

The subject matter relates primarily to drainage practices in The Netherlands and the United Kingdom. Because the authors have had wide experience in these and other countries, the scope of the text covers a broader geographic area than most books on this subject. Some information is based on U.S. experience, and terminology is somewhat different in the United States. For example, the authors imply that shallow drainage systems include surface drainage, mole drainage, and pipe drainage. Subsurface drains are called groundwater drains and include both pipe and ditch systems. This distinction between surface and subsurface drainage is not emphasized as much elsewhere as it is in the United States.

The book is well written and illustrated. The references are adequate. The units are all metric and consistent throughout. Example problems are given in about half of the chapters, barely adequate for a textbook. An instructor wishing to assign students work problems will be disappointed, as there are none. For this reason, the book would be a better reference than a text.

A couple of chapters on "salty soils" and on "salinization due to irrigation" are useful, but would normally not be found in a

book on drainage. Cost examples are given, but some procedures were difficult to follow and need further explanation. The use of different currencies in the examples complicates interpretation into practical terms. Subjects, such as land grading, drain pipe quality and soil loads on pipe, tractive force for design of channels, and design of sumps for pump drainage were entirely omitted or covered very lightly. Considerable space was devoted to peak runoff rates from sloping watersheds. Land reclamation (polders) and seepage through embankments were included.

The authors are to be commended for collecting and condensing a large amount of literature on land drainage. Much valuable information is included that is not otherwise readily available in one volume.—G. O. SCHWAB, *Department of Agricultural Engineering, Ohio State University, Columbus, 43210*.

## General

*Encyclopedia of Environmental Science and Engineering* (second edition). Edited by J. R. Pfafflin and E. N. Ziegler. 1,200 pp., in three volumes, illus., 1983. Gordon and Breach, New York, N.Y. 10016. \$500.

## Forests

*Ecology and Regeneration of Lodgepole Pine.* By James E. Lotan and David A. Perry. 51 pp., illus., refs., 1983. U.S. Department of Agriculture, Washington, D.C. 20250

*Managing the Family Forest.* 89 pp., 1983. Forest Service, U.S. Department of Agriculture, Atlanta, Ga. 30367.

*Timber: A Profitable Investment.* 1983. Forest Service, U.S. Department of Agriculture, Atlanta, Ga. 30367.

*Managing Storm-Damaged Areas.* 15 pp., 1983. Forest Service, U.S. Department

of Agriculture, Atlanta, Ga. 30367.  
*Forestland Grazing Guide*. 45 pp., 1983. Forest Service, U.S. Department of Agriculture, Atlanta, Ga. 30367.  
*Urban Forestry A-V Catalog*. 8 pp., 1983. Forest Service, U.S. Department of Agriculture, Atlanta, Ga. 30367.

*A Floristic Inventory of the Plant Communities of the San Francisco Peaks Research Natural Area*. By James M. Rominger and Laurie A. Paulik. 9 pp., illus., refs., apps., 1983. Rocky Mountain Forest and Range Experiment Station, Fort Collins, Colo. 80526.

*Shelterbelt Establishment and Growth at a Windswept Wyoming Rangeland Site*. By David L. Sturges. 12 pp., illus., 1983. Rocky Mountain Forest and Range Experiment Station, Fort Collins, Colo. 80526.

## Soils

*Evaluating Slope Stability Prior to Road Construction*. By James L. Clayton. 6 pp., illus., refs., 1983. Intermountain Forest and Range Experiment Station, Ogden, Utah 84401.

## Water

*Planning Guide for Evaluating Agricultural Nonpoint Source Water Quality Controls*. By Paul D. Robillard, Michael F. Walter, and Linda M. Bruckner. 1983. EPA-600/3-82-021. Center for Environmental Research Information, U.S. Environmental Protection Agency, Cincinnati, Ohio 45268.

*Acid Rain: A Water Resources Issue for the 80's*. Edited by Raymond Herrmann and A. Ivan Johnson. 84 pp., 11 papers, 1983. Proceedings of the American Water Resources Association; International Symposium on Hydrometeorology. American Water Resources Association, Bethesda, Md. 20814. \$5.95.

*How to Identify and Control Water Weeds & Algae*. 72 pp., illus., maps, 1983 (revised). Brown Deer Chemical Company, Brown Deer, Wisc. 53223. \$4.95.

*Ponds and Pools: Oases in the Landscape*. By Klaus Kabisch and Joachim Hemmerling. 260 pp., illus., refs., bibliog., index, 1983. Arco Publishing, Inc., New York, N.Y. 10003. \$14.95.

*Retrieval Procedures for Hydrologic Data from ARS Experimental Watersheds in the United States (REPHLEX)*. By J. L. Thurman, R. T. Roberts, and J. B. Burford. 114 pp., apps., 1983. Agricultural Reviews and Manuals ARM-NE-9. Water Data Laboratory, Beltsville Agricultural Research Center-West, Beltsville, Md. 20705.

*Handbook of Water Harvesting*. By Gary W. Frasier and Lloyd E. Myers. 45 pp., illus., tpls., 1983. U.S. Department of Agriculture, Washington, D.C. 20402.

*Advances in Drainage: Fourth International Drainage Symposium, December 1982, Chicago, Illinois*. 177 pp., 1983.

American Society of Agricultural Engineers, St. Joseph, Mich. 49085. \$14.50, ASAE members; \$18.50, postpaid.

*The Deadhorse Experiment: A Field Verification of the Subalpine Water Balance Model*. By Charles A. Troendle. 7 pp., illus., tpls., 1983. Rocky Mountain Forest and Range Experiment Station, Fort Collins, Colo. 80526.

*State, County, Regional and Municipal Jurisdiction of Ground-Water Protection. Proceedings of the Sixth National Ground-Water Quality Symposium*. 318 pp., illus., 1983. National Water Well Association, Worthington, Ohio 43085.

## Fish and Wildlife

*Agriculture and Wildlife Management*. By A. N. Moen. 367 pp., 1983. Corner-Brook Press, Lansing, N.Y. 14882. \$27, paperback; \$39, hard cover.

*Once a River: Bird Life and Habitat Changes on the Middle Gila*. By Amadeo M. Rea. 285 pp., illus., tpls., apps., biog., index, 1983. University of Arizona Press, Tucson, 85719. \$24.50.

*Wildlife on the Public Lands*. Illus., 1983. No. 024-011-00113-1. U.S. Government Printing Office, Washington, D.C. 20401. \$3.25.

*Wildlife and Timber from Private Lands: A Landowner's Guide to Planning*. 56 pp., 1983. Distribution Center, Cornell University, Ithaca, N.Y. 14850. \$3.95.

*Canopy Development in Lodgepole Pine: Implications for Wildlife Studies and Multiple Resource Management*. By Dennis M. Cole. 13 pp., illus., 1983. Intermountain Forest and Range Experiment Station, Ogden, Utah 84401.

## Agriculture

*Agriculture 2000: A Look at the Future*. 183 pp., illus., bibliog., 1983. Federal Intermediate Credit Banks, Farmbank Services, Denver, Colo. 80239.

*Mechanics in Agriculture*. By Lloyd J. Phipps. 689 pp., illus., index, 1983. The Interstate Printers & Publishers, Inc.,

Danville, Ill. 61832. \$22.50.

*Effects of Livestock Enterprises on the Economics of Soil and Water Conservation Practices in Iowa*. By David R. Krog, Shashanka Bhide, C. Arden Pope III, and Earl O. Heady. 92 pp., refs., tpls., 1983. CARD Rpt. 112, SWCP Series V. Center for Agricultural and Rural Development, Iowa State Univ., Ames, 50011.

*The Economics of Soil and Water Conservation Practices in Iowa: Results and Discussion*. By C. Arden Pope III, Shashanka Bhide, and Earl O. Heady. 158 pp., tpls., bibliog., apps., 1983. CARD Rpt. 109, SWCP Series II. The Center for Agricultural and Rural Development, Iowa State University, Ames, 50011.

*Effects of Tenure Arrangements, Capital Constraints, and Farm Size on the Economics of Soil and Water Conservation Practices in Iowa*. By Timm M. Banks, Shashanka Bhide, C. Arden Pope III, and Earl O. Heady. 150 pp., refs., tpls., apps., 1983. CARD rpt. 111, SWCP Series IV. Center for Agricultural and Rural Development, Iowa State Univ., Ames, 50011.

*Saline-Seep Diagnosis, Control, and Reclamation*. By P. L. Brown, A. D. Halvorson, F. H. Siddoway, H. F. Mayland, and M. R. Miller. 22 pp., illus., refs., tpls., app., gloss., 1983. Cons. Res. Rpt. 30. U.S. Government Printing Office, Washington, D.C. 20402.

*Study of Conservation Cropping on the Darling Downs—A Basis for Extension Programming*. By Shankariah Chamala, C. Milton Coughenour, and Ken J. Keith. 100 pp., illus., tpls., bibliog., apps., 1983. Department of Agriculture, University of Queensland, St. Lucia, Brisbane, Australia, 4067.

*Zero Tillage: Results of a 5 Year Program by Product Development Branch*. By G. E. Hultgreen, R. E. Morgan, and B. S. Aulakh. 22 pp., refs., 1983. Saskatchewan Wheat Pool, Regina, Sask. S4P 2Y6.

*Sprinkler Irrigation: Equipment and Practice*. By Melvyn Kay. 120 pp., illus., index, 1983. Batsford-David & Charles, North Pomfret, Vermont 05053. \$16.95.

## Ecology

*Environmental Biogeochemistry. Proceedings of the 5th International Symposium on Environmental Biogeochemistry*. R. Hallberg, editor. 576 pp., illus., refs., 1983. Ecological Bull. Vol. 35. Publishing House/FRN, S-113 85 Stockholm, Sweden. \$38.00.

## Energy

*Energy from Biomass: 2nd E.C. Conference*. Edited by A. Strub, P. Chartier, and G. Schleser. 1,148 pp., illus., index, 1983. Elsevier Science Publishing Co., Inc. New York, N.Y. 10017. \$96.25.

### Extra, Extra!

Extra copies of the May-June 1983 issue of the JSWC, "Conservation Tillage: A Special Issue," are available at the following prices:

1-9 copies - \$5.00  
 10-99 copies - \$4.00  
 100 or more copies - \$3.00

To order, write or call

SCSA  
 7515 N.E. Ankeny Road  
 Ankeny, Iowa 50021  
 (515) 289-2331

# STATEMENT OF OWNERSHIP, MANAGEMENT, AND CIRCULATION

1. Title of Publication: *Journal of Soil and Water Conservation*. 1A. Publication No.: 0022 4561. 2. Date of Filing: September 29, 1983. 3. Frequency of Issue: Bimonthly. 3A. No. of Issues Published Annually: Six. 3B. Annual Subscription Price: \$22.00. 4. Location of Known Office of Publication: 7515 Northeast Ankeny Road, Ankeny, Iowa 50021. 5. Location of the Headquarters or General Business Office of the Publisher: 7515 Northeast Ankeny Road, Ankeny, Iowa 50021-9764. 6. Names and Complete Addresses of Publisher, Editor, and Managing Editor: Publisher: Soil Conservation Society of America, 7515 Northeast Ankeny Road, Ankeny, Iowa 50021-9764. Editor: Max Schnepf, 7515 Northeast Ankeny Road, Ankeny, Iowa 50021-9764. Managing Editor: None. 7. Owner: Soil Conservation Society of America, 7515 Northeast Ankeny Road, Ankeny, Iowa 50021-9764. 8. Known Bondholders, Mortgagees, and Other Security Holders Owning or Holding 1 Percent or More of the Total Amount of Bonds, Mortgages or Other Securities: None. 9. The purpose, function, and nonprofit status of this organization and the exempt status for federal income tax purposes have not changed during the preceding 12 months. 10. Extent and Nature of Circulation:

	Average No. Copies Each Issue During Preceding 12 months	Actual No. Copies of Single Issue Published Nearest to Filing Date
A. Total No. Copies Printed	14,862	14,000
B. Paid Circulation		
1. Sales through Dealers and Carriers, Street Vendors, and Counter Sales	0	0
2. Mail Subscriptions	13,051	12,870
C. Total Paid Circulation	13,051	12,870
D. Free Distribution by Mail, Carrier, or Other Means, Samples, Complimentary, and Other Free Copies	900	455
E. Total Distribution	13,951	13,325
F. Copies Not Distributed		
1. Office Use, Left Over, Unaccounted, Spoiled After Printing	911	675
2. Returns from News Agents	0	0
G. Total	14,862	14,000

11. I certify that the statements made by me above are correct and complete. — *Walter N. Peechatka, Executive Vice-president, Soil Conservation Society of America.*