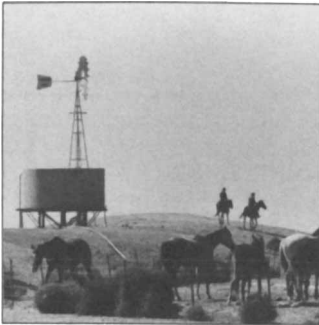


**CONTENTS****Features**

**3**  
**Viewpoint: Setting a course for the Journal**  
Max Schnepf explains the reasons for change in the JSWC's organization and appearance

**4**  
**Soil conservation "down under"**  
Arthur Latornell reports on problems and programs in Australia



**Environmental education for the eighties**  
John F. Disinger discusses progress in environmental education during the seventies and prospects for the eighties

**13**  
**Protecting the soil resource base**  
W. E. Larson looks at soil degradation in the United States and its effects on food and fiber production

**17**  
**Developing quail habitat on farmland**  
William G. Minser III and James L. Byford provide guidelines for those landowners in the Southeast who want to develop habitat for quail and other farm game species

**19**  
**Saving farmland, the King County program**  
Richard W. Dunford describes efforts to retain agricultural land and open space in Washington's most urban county

**22**  
**Commentary: Farm and conservation policy decisions Reagan will face**  
Lauren Soth looks at the future of conservation programs under the new Reagan administration

**24**  
**Commentary: Problems and prospects for the Agricultural Conservation Program**  
Kenneth A. Cook analyzes the first major evaluation of ACP since the program's start in 1936

**Departments**

**2**  
**Pen points**

**28**  
**In the news**

**33**  
**Upcoming**

**34**  
**Books, etc.**

**Research reports**

**37**  
**Farmers' attitudes toward land use planning**  
Gordon Bultena, Peter Nowak, Eric Hoiberg, and Don Albrecht

**41**  
**Livestock and vegetative performance on reclaimed and nonmined rangeland in North Dakota**  
L. Hofmann, R. E. Ries, and R. J. Lorenz

**44**  
**Slot mulch for runoff and erosion control**  
K. E. Saxton, D. K. McCool, and R. I. Papendick

**47**  
**Suspended sediment production potential on undisturbed forest land**  
John M. Fowler and Earl O. Heady

**50**  
**Visitor impact assessment of scenic view areas at Bryce Canyon National Park**  
C. A. Call, J. R. Barker, and C. M. McKell

**53**  
**Validation of trailside registration boxes**  
H. E. Echelberger, R. E. Leonard, and H. J. Plumley

Cover  
Wheat, a universal symbol for food and fiber, brings to mind the task of protecting the soil resource base, thereby assuring an agricultural productivity sufficient to feed people in the decades ahead. See page 13. Photo by Jim Romo, Missoula, Montana.