

CONTENTS**Features****60
Viewpoint: New uses of old tools to conserve soil**

Steve J. Nacht contends that the nation must concern itself more with performance in soil conservation programs

**62
The National Agricultural Lands Study, an interview with Robert Gray**

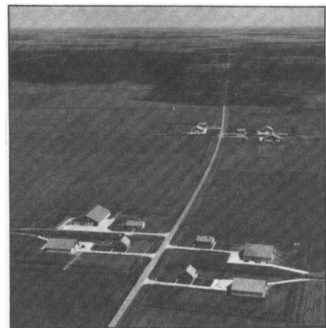
NALS's director discusses the findings and recommendations from this 18-month federal study

**69
How ya gonna keep 'em away from the farm?**

Edward Thompson, Jr., looks at conflicts between farm and city folk on the urban fringe

**71
Farmland protection in the Netherlands**

Frederick R. Steiner describes the comprehensive planning effort that enables the Dutch to maintain a productive farmland base

**77
Topsoil management on mined lands**

Gerald E. Schuman and James F. Power offer recommendations for using topsoil effectively in surface mine reclamation

**79
The land and hazardous waste management**

Joseph S. Pizzuto and Charles W. Townley review the impacts of toxic waste disposal on land

**82
Soil erosion effects on soil productivity: A research perspective**

The National Soil Erosion-Soil Productivity Research Planning Committee summarizes some knowns and unknowns about erosion's effects on soil productivity

**91
Commentary: The National Agricultural Lands Study goes out with a bang**

Kenneth A. Cook looks at initial reaction to the NALS report

**94
Commentary: Conservation district law: Choices and challenges for Wisconsin's future**

Donald G. Last discusses legislative proposals aimed at keeping conservation districts responsive to public needs in the Badger State

Departments**59
Pen points****97
In the news****102
Upcoming****103
Books, etc.****Research reports****107
Profitability of soil conservation practices in Missouri**

David E. Ervin and Robert Washburn

**111
Establishment of forage species on surface-mined land in Kentucky**

Donald S. Henry, William F. Kuenstler, and Samuel A. Sanders

**114
Land values in two soil zones with and without fertilizers: An economic analysis**

H. Douglas Jose and Dwight D. Markland

Cover
Bulb fields on reclaimed land near the city of Haarlem in the Netherlands. See page 71. Photo courtesy of the Royal Netherlands Embassy.

The Soil Conservation Society of America is dedicated to promoting the science and art of good land use, with emphasis on conservation of soil, water, air, and related natural resources, including all forms of beneficial plant and animal life. To this end, SCSA seeks through the *Journal of Soil and Water Conservation* and other programs to educate people so that mankind can use and enjoy these natural resources forever.

OFFICERS**President**

Jesse L. Hicks, Raleigh, N.C.

President-elect

Robert C. Baum, Salem, Oreg.

Vice-president

Chris J. Johannsen, Davis, Calif.

Second Vice-president

Floyd E. Heft, Columbus, Ohio

Past-president

Gerald R. Calhoun, Bowie, Md.

Treasurer

H. Lynn Horak, Des Moines, Iowa

COUNCIL

Elmer E. Offerman, Storrs, Conn.

Maurice G. Cook, Raleigh, N.C.

Carl V. Thompson, Alexandria, La.

Donald E. Van Meter, Muncie, Ind.

Howard M. Hughes, Des Moines, Iowa

Norris P. Swanson, Lincoln, Nebr.

Earl Burnett, Temple, Tex.

Richard F. Sanders, Ogden, Utah

David R. Cressman, Kitchener, Ont.

John R. Henry, Locust Grove, Va.

Andy I. Tucker, Stillwater, Okla.

STAFF**Editorial Director**

Larry D. Davis

Editor

Max Schnepf

Assistant Editors

James L. Sanders

John Walter

Production Assistant

Betty J. Taylor

Advertising Representative

Fox Associates, Inc.

200 East Ontario Street

Chicago, Illinois 60611

(312) 649-1650

EDITORIAL BOARD

A. D. Latonell (chm), Richmond Hill, Ont.

Orville W. Bidwell, Manhattan, Kans.

Blair T. Bower, Arlington, Va.

James E. Box, Jr., Watkinsonville, Ga.

Donn G. DeCoursey, Oxford, Miss.

Robert W. Harris, Wilsonville, Oreg.

R. J. Hildreth, Oak Brook, Ill.

Gunnar C. Isberg, Minneapolis, Minn.

Edward A. Johnson, Washington, D.C.

William R. Oschwald, Urbana, Ill.

J. Herbert Snyder, Davis, Calif.

John F. Timmons, Ames, Iowa

L. P. Wilding, College Station, Tex.

J. Melvin Williams, Portland, Oreg.

Warren Zitzmann, Washington, D.C.

The JSWC (ISSN 0022-4561) is published

six times a year in January, March, May,

July, September, and November.

Copyright © 1981 by SCSA. SCSA

assumes no responsibility for

statements and opinions expressed by

contributors. Subscription is by

membership in SCSA or by subscription.

Membership dues: \$30.00 a year (\$35.00

outside the U.S. and Canada).

Institutional and individual

subscriptions: \$22.00 a year (\$25.00

outside the U.S. and Canada). Address

correspondence to SCSA, 7515 N.E.

Ankeny Rd., Ankeny, IA 50021. Phone

(515) 289-2331. Second class

postage paid at Ankeny

and Des Moines, Iowa.

Postmaster, send form

3579 to JSWC, 7515 N.E.

Ankeny Rd., Ankeny, IA 50021.

