

**CONTENTS****Features****324****Viewpoint: New approaches to commodity programs and conservation goals**

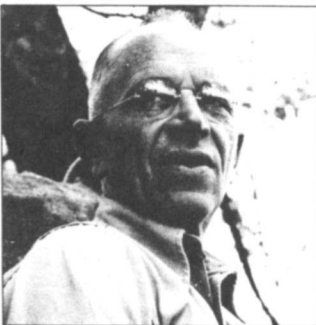
Milton E. "Bud" Meikelburg proposes reforms of federal policy that would address the conflict between farm programs and conservation goals

**326****Stretching conservation assistance**

Clayton W. Ogg, G. Timothy Denley, and Kenneth C. Clayton look at the merits of combining targeting and variable cost-sharing

**329****Leopold's land aesthetic**

J. Baird Callicott explores an area of Aldo Leopold's philosophy that could serve to inspire landowners to conservation efforts today

**333****The conversion experiment: A strategy to reduce farming costs**

Martin N. Culik updates research on making the transition from conventional farming to alternative agricultural methods

**336****Modern terrace systems**

Richard E. Highfill defines a place for terracing in current conservation programs

**339****Obstacles to conservation tillage on dryland**

T. W. Masseo surveys the key management points that underpin successful use of conservation tillage in dryland farming

**342****Reviving Arizona's rangelands**

Jerry R. Cox, Howard L. Morton, Jimmy T. LaBaume, and Kenneth G. Renard present the case and means for renovating semidesert rangeland in Arizona

**346****Commentary: Got those GAO blues again**

Ken Cook critiques a new evaluation of federal soil and water conservation programs

**350****Commentary: Whither goest state and private forestry?**

Luke Popovich traces the course of a key unresolved issue in forestry policy.

**Departments****322****Pen points****353****In the news****358****Upcoming****359****Books, etc.****Research reports****361****Seeding rate recommendations for a winter rye cover crop based on expected leaf area index**

W. J. Grant, C. D. Stanley, G. R. Benoit, and D. B. Torrey

**363****Wave-protected versus unprotected transplantings on a Texas bay shoreline**

James W. Webb and J. D. Dodd

**366****Residue management to reduce furrow erosion**

D. E. Miller and J. S. Aarstad

**370****The economics of conservation tillage in Iowa**

C. Arden Pope III, Shashanka Bhide, and Earl O. Heady

**374****Tillage effects on soil properties, diseases, cyst nematodes, and soybean yields**

D. D. Tyler, J. R. Overton, and A. Y. Chambers

**Cover**

A combination sediment-detention basin controls sedimentation and runoff from new development near South Windsor, Connecticut. Outlet in foreground enables controlled flow downstream. Photo by Vern Anderson.