

CONTENTS

Features

8
Viewpoint: Management of nonpoint-source pollution: What priority?
By Lee M. Thomas

9
A primer on nonpoint pollution
By Gordon Chesters and Linda-Jo Schierow



14
Nonpoint sources of water pollution
By Carl F. Myers, James Meek, Stuart Tuller, and Anne Weinberg

19
The off-site costs of soil erosion
By Edwin H. Clark, II

23
Agricultural nonpoint pollution control: An assessment
By John B. Braden and Donald L. Uchtmann

27
Policies for nonpoint-source water pollution control
By Winston Harrington, Alan J. Krupnick, and Henry M. Peskin

33
Paying the nonpoint pollution control bill
By Lawrence W. Libby

37
Nonpoint-source water pollution: A panel discussion

48
Salinity pollution from irrigated agriculture
By Mohamed T. El-Ashry, Jan van Schilfgaarde, and Susan Shiffman

53
State initiatives in nonpoint-source pollution control
By Roberta Savage

55
Nonpoint pollution control: The Wisconsin experience
By John G. Konrad, James S. Baumann, and Susan E. Bergquist

62
The conservation district role in nonpoint pollution control
By Mary M. Garner and Robert E. Williams



65
Setting agricultural pollution control priorities
By Leland L. Holstine and Susan M. Lowman

68
Selecting critical areas for nonpoint-source pollution control
By R. P. Maas, M. D. Smolen, and S. A. Dressing

72
Urban sediment and stormwater control: The Maryland experience
By Roy E. Benner

76
Successful water quality planning: An areawide perspective
By Miriam Koral Gensemer and Marianne Yamaguchi

79
Saving the Chesapeake: Maryland's agricultural education program
By W. L. Magette, R. A. Weismiller, and K. C. Gugulis

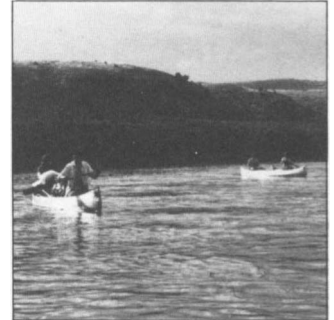


82
Organizing an information program for nonpoint pollution control
By Douglas D. Sorenson

84
Belgrave Creek: A successful nonpoint pollution control project in rural Ontario
By Mike Puddister

87
Managing riparian ecosystems to control nonpoint pollution
By Richard Lowrance, Ralph Leonard, and Joseph Sheridan

92
Nonpoint pollution control on public lands
By Bruce P. Van Haveren, Eric B. Janes, and William L. Jackson



95
Coliforms as an indicator of water quality in wildland streams
By Carolyn C. Bohn and John C. Buckhouse

98
Logging and water quality: State regulation in New England
By Lloyd C. Irland

103
The Oregon Forest Practices Act
By Leo W. Wilson

105
Commentary: Agricultural nonpoint pollution control: A time for sticks?
By Ken Cook

107
Commentary: The politics of nonpoint pollution control: A local perspective
By Richard S. Howe

108
Commentary: Cost-effective targeting of agricultural nonpoint-source pollution controls
By A. M. Duda and R. J. Johnson

Journal of Soil & Water Conservation

To advance the science and art of good land use

111 Commentary: Agricultural nonpoint pollution control: Voluntary or mandatory?

By Donald J. Epp and
James S. Shortle

Departments

4 Pen points

115 In the news

122 Upcoming

123 Books, etc.

176 The SCSA view

Research reports

125 Regional water quality impacts of intensive row-crop agriculture: A Lake Erie Basin case study

David B. Baker

132 Soil loss reduction in Finley Creek, Indiana: An economic analysis of alternative policies

John Gary Lee, Stephen B.
Lovejoy, and David B.
Beasley

136 An accelerated implementation program for reducing the diffuse-source phosphorus load to Lake Erie

D. L. Forster, T. J. Logan,
S. M. Yaksich, and J. R.
Adams

141 Sediment deposits in drainage ditches: A cropland externality

D. Lynn Forster and Girmai
Abraham

144 Subsidy and tax effects of controlling stream sedimentation in South Carolina

R. D. Seale, J. W. Hubbard,
and E. H. Kaiser

148 Channel cross-section changes in Mississippi's Goodwin Creek

Joseph B. Murphey and
Earl H. Grissinger

153 Dissolved nitrogen and phosphorus in runoff from watersheds in conservation and conventional tillage

E. E. Alberts and R. G.
Spomer

157 Conservation practice effects on phosphorus losses from Southern Piedmont watersheds

G. W. Langdale, R. A.
Leonard, and A. W.
Thomas

161 Runoff, soil, and nutrient losses from rangeland and dry- farmed cropland in the Southern High Plains

O. R. Jones, H. V. Eck, S.
J. Smith, G. A. Coleman,
and V. L. Hauser

164 Best management practices for controlling nonpoint-source pollution on forested watersheds

James A. Lynch, Edward S.
Corbett, and Keith
Mussallem

168 Plant nutrient losses by soil erosion and mass movement after wildfire

J. D. Helvey, A. R.
Tiedemann, and T. D.
Anderson

173 Effects of livestock wastes and agricultural drainage on water quality: An Ontario case study

S. Thornley and A. W. Bos

Cover: As many as seven concentrations of water colorants are visible in this spectacular photograph of the point where Lake Huron empties into the St. Clair River between Port Huron, Michigan, on the left and Sarina, Ontario, on the right. The brown tones toward the Michigan side of the river are the result of silty clay material eroded from the Lake Huron shoreline. The dark middle of the channel is the relatively clear water from the open lake. The white tones along the Ontario shoreline are created by suspended rock material from a concrete operation. The St. Clair River connects the upper Great Lakes and Lake Erie. Photo by John Lyon, Ohio State University.