

## CONTENTS

### Features

**317**

#### **Viewpoint: The public's changing view of agriculture and the environment**

Sandra S. Batie examines the implications of changing public perceptions toward agriculture and its impacts on environmental quality

**318**

#### **Wildfire: Managing the hazard in urbanizing areas**

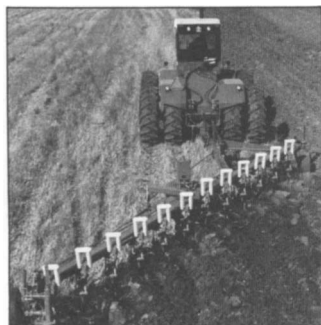
Philip D. Gardner, Hanna Cortner, and Jo Anne Bridges discuss options for minimizing wildfire damage to developments in urbanizing areas



**322**

#### **Soil erosion on new cropland: A sodbusting perspective**

Ralph E. Heimlich analyzes what impacts sodbuster legislation might have on rates of soil erosion nationally



**327**

#### **Teaching conservation professionally**

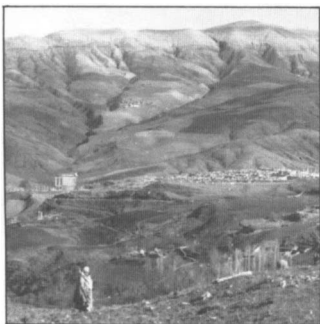
Al Palladino explains how conservation professionals can play a more effective role in conservation education efforts



**329**

#### **Managing salinity: Lessons from the past**

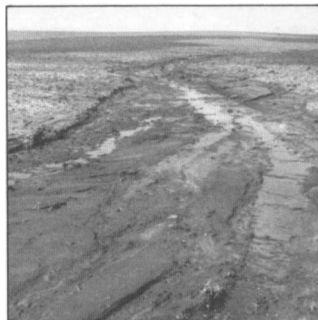
Diane E. Gelburd recalls what history tells us about our failure to deal with salinity problems on cropland



**332**

#### **Evaluating nonpoint pollution using remotely sensed data in soil erosion models**

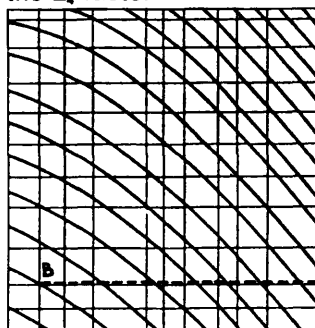
R. E. Pelletier explains a means of objectively and efficiently determining the scope and location of severe water pollution problems



**336**

#### **A graphical aid for the wind erosion equation**

Shu-Tung Chu describes a quick way of evaluating the  $E_p$  factor



**337**

#### **Commentary: Conservation easements and the conservation movement**

Duane Sand expands on one idea that might simultaneously ease the credit crunch in agriculture and achieve conservation objectives

**338**

#### **Commentary: Regulation of soil loss on farmland: How effective?**

Robert E. Coughlin looks at the track record of state and local attempts to mandate control of soil erosion

### Departments

**341**

**In the news**

**346**

**Upcoming**

**348**

**Books, etc.**

**392**

**The SCSA View**

## CONTENTS

### Research reports

**349**

**Effect of erosion on soil productivity: An international comparison**

Frank R. Rijsberman and M. Gordon Wolman

**354**

**Effectiveness of grass barriers for reducing wind erosiveness**

J. K. Aase, F. H. Siddoway, and A. L. Black

**358**

**Effectiveness of residues from six crops for reducing wind erosion in a semiarid region**

J. D. Bilbro and D. W. Fryrear

**360**

**Water table control for water resource projects on sandy soils**

C. W. Doty, J. E. Parsons, A. W. Badr, A. Nesehzadeh-Tabrizi, and R. W. Skaggs

**364**

**Feedstock selection for small- and intermediate-scale fuel ethanol distilleries**

Mark Meo

**367**

**Private rangeland improvement in the Great Plains: An analysis of investment needs in 1985 and 1990**

Giles T. Rafsnider, Melvin D. Skold, and Donald T. Pendleton

**370**

**Infiltration parameters and Landsat classification of erosion-prone landscapes in the San Juan Basin, New Mexico**

Thomas W. Gardner and William D. Duffy

**374**

**Stream habitat and fisheries response to livestock grazing and instream improvement structures, Big Creek, Utah**

William S. Platts and Rodger Loren Nelson

**379**

**Soil protection by natural vegetation on clearcut forest lands in Arkansas**

R. Scott Beasley and Alfredo B. Granillo

**382**

**Effects of tillage with controlled wheel traffic on soil properties and root growth of corn**

J. W. Bauder, G. W. Randall, and R. T. Schuler

**386**

**Weather variability, climatic change, and soybean production**

Louis M. Thompson

**389**

**Effect of grain straw and furrow irrigation stream size on soil erosion and infiltration**

M. J. Brown

**Cover:** Wildfire in urbanizing areas of California and elsewhere poses a growing threat to personal property and human life as well as soils and water quality (see page 318). Photo courtesy of the California Region Office of the Forest Service, U.S. Department of Agriculture, San Francisco.