

## CONTENTS

### Features

#### 103 Viewpoint: Dedication in the face of challenge

R. Neil Sampson outlines environmental and conservation challenges facing natural resource professionals as the Bush Administration takes office

#### 105 Stress in the Soil Conservation Service

C. Paul Barlow looks at the results of stressmapping tests and how employees of this federal agency are coping with increased workloads

#### 111 The search for sustainable agroecosystems

Benjamin R. Stinner and Garfield J. House report that conservation tillage and multiple cropping represent two alternate strategies to sustain crop yields and minimize environmental degradation

#### 117 To till or not to till during drought

A panel of experts reviews the performance of no-till during 1988 and offers recommendations for overcoming potential problems



#### 121 An interdisciplinary process for protecting instream flows

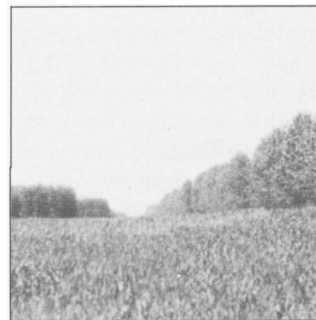
William L. Jackson, Bo Shelby, Anthony Martinez, and Bruce P. Van Haveren describe a new value-based, team-oriented approach to determining instream flow needs

#### 127 Rural Clean Water: Geology and survival on the Snake River Plain

Charles E. Little describes another of the experimental Rural Clean Water Program projects, one involving irrigated acres

#### 130 Shelterbelts in the Soviet Union

W. R. Schroeder and J. Kort relate experiences from a study tour of Soviet shelterbelts, during which they exchanged information with Soviet scientists



### Commentary

#### 135 Will the real leaders in national water policy please stand up?

Lawrence Mosher asks whether the federal "nonpolicy" on water management will change with the advent of the new administration

### Research Reports

#### 149 Land use impacts of private sewage systems in Wisconsin

Harvey M. Jacobs and Mark E. Hanson

#### 153 Improving grass seedling establishment

Victor L. Hauser

#### 156 Visitor use impacts within the Knobstone Trail corridor

Charles O. Mortensen

#### 160 Management effects on wind-eroded sediment and plant nutrients

T. M. Zobeck, D. W. Fryrear, and R. D. Pettit

#### 164 The role of on-farm nutrient balance assessments in an integrated approach to nutrient management

L. E. Lanyon and D. B. Beegle

#### 168 AGNPS: A nonpoint-source pollution model for evaluating agricultural watersheds

R. A. Young, C. A. Onstad, D. D. Bosch, and W. P. Anderson

#### 173 Cost-effectiveness of the variable cost-share option in the Agricultural Conservation Program

William M. Park and Steven E. Monteith

### Departments

#### 98 The SWCS view

#### 100 Pen points

#### 138 In the news

#### 144 Professional services & classifieds

#### 145 Upcoming

#### 146 Books, etc.

Cover: A farm scene in central Alberta. Edmonton, Alberta will be the site of the 44th annual meeting of SWCS, July 30-August 2, 1989 (see page 139). Alberta Agriculture photo

*Journal of Soil and Water Conservation* (ISSN 0022-4561) is published six times a year in January, March, May, July, September, and November by the Soil and Water Conservation Society, 7515 N.E. Ankeny Road, Ankeny, Iowa 50021-9764. Second class postage paid at Ankeny, Iowa, and additional mailing offices.  
POSTMASTER: Send address changes to *Journal of Soil and Water Conservation*, 7515 N.E. Ankeny Road, Ankeny, Iowa 50021-9764.

Copyright © 1989 by the Soil and Water Conservation Society. SWCS assumes no responsibility for statements and opinions expressed by contributors.

Address all editorial and business correspondence to SWCS, 7515 N.E. Ankeny Road, Ankeny, Iowa 50021-9764; telephone (515) 289-2331. Subscription is by membership in SWCS or by subscription. Membership dues are \$37 a year (\$42 outside the U.S. and Canada); subscriptions are \$30 a year (\$35 outside the U.S. and Canada).