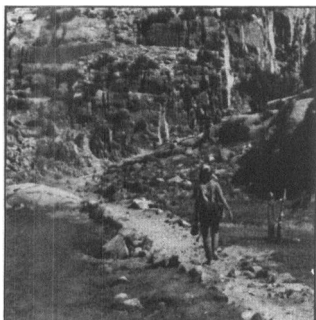


CONTENTS**Features****359****Viewpoint: A new wilderness revolution**

Congressman Bruce F. Vento says it is time to upgrade the quality of management in the National Wilderness Preservation System

360**Wilderness management: Has it come of age?**

David N. Cole looks at progress in managing areas in the National Wilderness Preservation System on the 25th anniversary of the Wilderness Act

**365****Conservation tillage research needs**

D. L. Karlen sets forth an agenda for improving the science and art of conservation tillage in the Midwest and East

370**Costs and benefits of the Conservation Reserve Program**

C. Edwin Young and C. Tim Osborn estimate that a full 45-million-acre CRP could produce net benefits ranging from \$3.4 to \$11 billion for farmers, consumers, and the environment

374**An innovative county soil erosion control ordinance**

Philip H. Wheeler describes the development of local regulations in Olmsted County, Minnesota, to control soil erosion on cropland

379**Geographic differences in the validity of a linear scale of innate soil productivity**

P. J. Gersmehl and D. A. Brown present a new tool to help demonstrate the need for regionally targeted research into the factors that underlie what is often described as innate soil productivity

Commentary**383****Swampbuster implementation: Missed opportunities for wetland protection**

James M. McElfish, Jr., and Kenneth J. Adler assert that the effectiveness of the swampbuster provision is limited because of procedural or other weaknesses in the law's implementation

Research reports**397****Wind stripcropping using weeping lovegrass in the southern High Plains**

A. Sajjadi and R. E. Zartman

399**Use of ground-penetrating radar on upland Coastal Plain soils**

R. K. Hubbard, L. E. Asmussen, and H. F. Perkins

405**Growth of slash pine planted in soil disturbed by wet-weather logging**

Allan E. Tiarks

408**A nonparametric approach to potential erosion on mined and reclaimed areas**

A. S. Rogowski, B. E. Weinrich, and R. M. Khanbilvardi

412**Land-leveling effects on soil texture, organic matter content, and aggregate stability**

Paul W. Unger, Larry J. Fulton, and Ordie R. Jones

415**Effects of soil loss on emergence and growth of loblolly pine**

Kenneth W. Farrish

417**Soil erosion studies in Peru**

Julio C. Alegre, Carmen Felipe-Morales, and Braulio La Torre

420**Constraints to conservation farming in Java's uplands**

Paul C. Huszar and Harold C. Cochrane

Departments**354****The SWCS view****355****Pen points****386****In the news****394****Professional services & classifieds****395****Upcoming****396****Books, etc.**

Cover: The sands of Snow Canyon, Utah, remind one of the importance of water. SWCS's 45th annual meeting, "Water Futures" takes place in Salt Lake City, Utah, July 29-August 1. Soil Conservation Service photo by Ron Nichols.

Journal of Soil and Water Conservation (ISSN 0022-4561) is published six times a year in January, March, May, July, September, and November by the Soil and Water Conservation Society, 7515 N.E. Ankeny Road, Ankeny, Iowa 50021-9764. Second class postage paid at Ankeny, Iowa, and additional mailing offices. POSTMASTER: Send address changes to *Journal of Soil and Water Conservation*, 7515 N.E. Ankeny Road, Ankeny, Iowa 50021-9764.

Copyright © 1990 by the Soil and Water Conservation Society. SWCS assumes no responsibility for statements and opinions expressed by contributors.

Address all editorial and business correspondence to SWCS, 7515 N.E. Ankeny Road, Ankeny, Iowa 50021-9764; telephone (515) 289-2331. Subscription is by membership in SWCS or by subscription. Membership dues are \$44 a year (\$50 outside the U.S. and Canada); subscriptions are \$30 a year (\$35 outside the U.S. and Canada).