

# JOURNAL OF SOIL AND WATER Conservation

THIRD QUARTER 1998

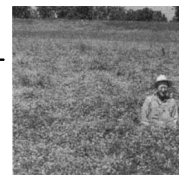
VOLUME 53, NUMBER 3

## RESEARCH

- 194 No-till development in Chequén Farm and its influence on some physical, chemical, and biological parameters**  
*Carlos C. Crovetto*
- 200 Cover crop effects on soil water relationships**  
*Paul W. Unger and Merle F. Vigil*
- 207 Cover crop impacts on watershed hydrology**  
*Seth M. Dabney*
- 214 Nitrogen and carbon cycling in relation to cover crop residue quality**  
*M.G. Waggoner, M.L. Cabrera, and N.N. Ranells*
- 219 Soil properties in no-till corn with different cover crops**  
*M.D. Mullen, C.G. Melhorn, D.D. Tyler, and B.N. Duck*
- 224 Cover crop and soil quality interactions in agroecosystems**  
*D.C. Reicosky and F. Forcella*
- 230 Using winter cover crops to reduce groundwater nitrate contamination**  
*Kenneth W. Staver and Russell B. Brinsfield*
- 241 Sequential NLEAP simulations to examine effect of early and late planted winter cover crops on nitrogen dynamics**  
*Jorge A. Delgado*
- 245 Enhancing soil nitrogen mineralization and corn yield with cover crops**  
*M. E. Jones, R.R. Harwood, N.C. Dehne, J. Smeenk, and E. Parker*
- 249 Effects of temporary and permanent soil cover on grape yield and soil**  
*Andreas Klik, Josef Rosner, and Willibald Loiskandl*
- 254 Cropping system influences on several soil quality attributes**  
*Brian J. Wienhold and Ardell D. Halvorson*
- 259 Spatial analysis of biomass and N accumulation of a winter wheat cover crop grown after a drought-stressed corn crop**  
*Philip J. Bauer, E. John Sadler, and Warren J. Busscher*
- 263 Surface energy balance partitioning over rye and oats cover crops**  
*J. H. Prueger, J.L. Hatfield, and T.J. Sauer*
- 268 Nitrogen availability as affected by ten years of cover crop and tillage systems in southern Brazil**  
*T.J.C. Amado, S.B. Fernandez and J. Mierniczuk*
- 272 Spring-seeded smother plants for weed control in corn and soybean**  
*D.D. Buhler, Keith Kohler, and M.S. Foster*
- 276 Oat and rye overseeded into soybean as fall cover crops in the Midwest**  
*T.J. Johnson, T.C. Kasper, K.A. Kohler, S.J. Corak, and S.D. Logsdon*
- 280 Economic analysis of the effects of winter cover crops on no-tillage corn yield response to applied nitrogen**  
*R.K. Roberts, J.A. Larson, D.D. Tyler, B.N. Duck, and K.D. Dillivan*
- 285 Stochastic dominance analysis of winter cover crop and nitrogen fertilizer systems for no-tillage corn**  
*J. A. Larson, R.K. Roberts, D.D. Tyler, and S.P. Slinsky*
- 289 Poster abstracts**

## DEPARTMENTS

- 186 Editorial**
- 187 Pen Points**
- 188 Books, etc.**
- 191 Upcoming**



### Cover

A farmer stands in a field of birdsfoot trefoil in Iowa. Cover photo courtesy of USDA-NRCS